



# Acacia Realty



## lot 2906 Litchfield Park Road Batchelor NT

1 1 2

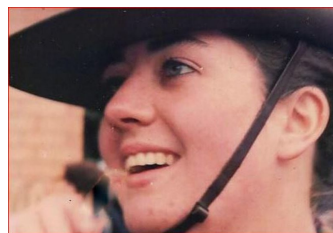
Located only 10 minutes from Batchelor on the main access to Litchfield National Park, this rural property is quiet and would be perfect for FIFO workers or for those wanting an affordable start in the market having been recently refurbished to the highest standard so ready to move in and enjoy.

**Price** : \$ 275,000

**View** : <https://www.acaciarealty.com.au/sale/nt/darwin-area/batchelor/residential/rural/5719795>

### Features include

- \* 1 bedroom home with 18m roof over head
- \* Large living area measuring 12 x 4m with new tiles and split a/c
- \* Modern kitchen with corrugated iron walls & new floating floors
- \* The timber breakfast bar is a real feature
- \* There's gas cooking and loads of bench space
- \* The bedroom features an ensuite



**Monica Baumgartner**  
0409 768 420

This drawing is for illustration purposes only.  
All measurement are approximate only and information intended to be relied upon should be independently verified.  
Plan by Realistic Views Photography

