



Acacia Realty



Batchelor

This parcel of land is located surrounding Crater Lake which is on Crater Lake Road which can be reached by either Batchelor Road or Stuart Highway.

There is a lot of history in the area dating back to 1881 with agriculture enterprises then in the 1930-1945 with the area a strategic Defence staging area with severe airfields and many WWII sites remain visible today.

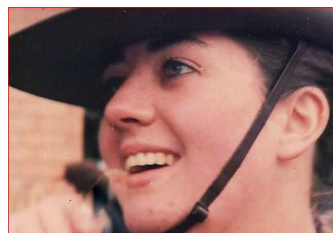
After the war the area turned to mineral exploration and Crater Lake was utilised as the town water supply and as the initial water supply for the Rum Jungle Mine. An article published in the Northern Standard prohibiting swimming in the lake on 21st January 1954.

However very little is documented regarding the history of this lake, how it was formed it is thought to have been

Price : Open to Offers

Land Size : 50 Acres

View : <https://www.acaciarealty.com.au/sale/nt/darwin-area/batchelor/residential/rural/5719914>



Monica Baumgartner
0409 768 420