






16 Price Road Girraween NT

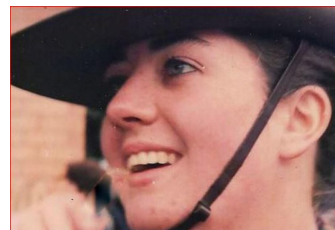
3  2  4 

This solid block ground level home is situated on a fully fenced 1.14 hectare [11400m² or 2.8 acre] block in the highly sought-after Girraween Estate, with a dual access all-weather driveway leading through to the undercover double carport, 3 Bedroom home, and sheds.

It has a generous sized master bedroom, with walk in robe, and ensuite on one end of the house, complemented by an open planned living-dining space, and two additional bedrooms with built in robes, a separate toilet, and a bathroom at the other end of the house. The kitchen boasts a large corner pantry, raised built in oven, electric ceramic hot plates, dishwasher, double sink, microwave space and loads of cupboard space.

Some additional features of this beautiful property are, but not limited to:

Building Size : 300 sqm
Land Size : 11400 sqm
View : <https://www.acaciarealty.com.au/sale/nt/darwin-area/girraween/residential/house/7165156>



Monica Baumgartner
0409 768 420



