



605 Litchfield Park Road Batchelor NT

3 1

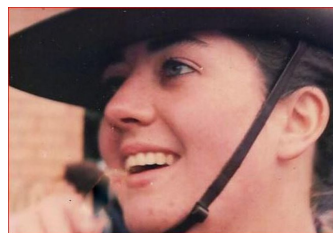
This 20 acres of land at the gateway to Litchfield National Park has a wonderfully warm and inviting home. The property is 6 kms from the Park boundary, 13 kms from Batchelor and 113 kms from Darwin. Coolalinga Village with its current mega growth in business and shopping, is less than an hour away.

Land Size : 80000 sqm

View : <https://www.acaciarealty.com.au/sale/nt/darwin-area/batchelor/residential/house/7693947>

This property is about lifestyle and features include .

- ? 3 Bedrooms
- ? 1 Bathroom
- ? Internal Laundry
- ? Open planned kitchen dining and lounge
- ? Tiled throughout
- ? Aid-conditioned throughout
- ? 3 sides with verandahs to overlook the valley from its elevated position
- ? 2 x Bores 2LPS and 3LPS both equipped



Monica Baumgartner
0409 768 420



2907

LITCHFIELD PARK ROAD

2910

